



VistaLuxe® collection



We're for the visionaries.®

My Vision:
Invite beautiful views
from
sunrise to sunset.

Brad Tomecek, AIA, LEED BD+C
Tomecek Studio Architecture | Denver, CO



My Vision:
Create a home
simultaneously separate from
and intertwined with
nature.

Gregory Wiedemann, AIA
Wiedemann Architects, LLC | Bethesda, MD



My Vision:
Dissolve the boundary
between
home and horizon.

Amy Janof, AIA
Janof Architecture | Seattle, WA



Our Vision:
Create a home
where architecture
is distilled
to its very essence.

**Gabriel Keller, Assoc. AIA
and Lars Peterssen, AIA**
Peterssen/Keller Architecture | Minneapolis, MN



My Vision:
Create a dynamic structure
that incorporates
optimal views.

Jason Weil, Architect
Retro+Fit Design, LLC | Asheville, NC





Table of Contents

VistaLuxe Collection.....	4-5	Options & Accessories.....	30-34
Casements & Awnings.....	6-7	Professional Tools.....	35
Direct Sets.....	8-9	Cross Section Drawings.....	36-43
Corner Direct Sets.....	10-11	Mull & Stack Details.....	44-49
Geometric Direct Sets.....	12-13	Complementary Cross Section Drawings..	50-57
Swinging Doors.....	14-15	Sizing & Limitations.....	58-61
Complementary Products.....	16-29	Clear Opening Dimensions.....	62-65

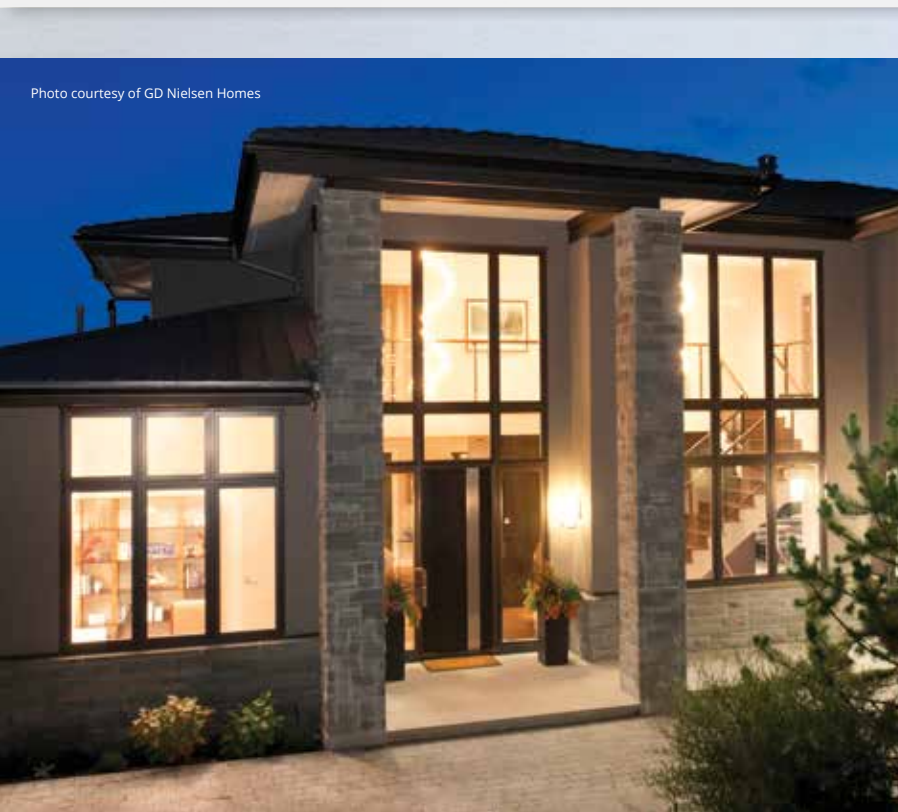
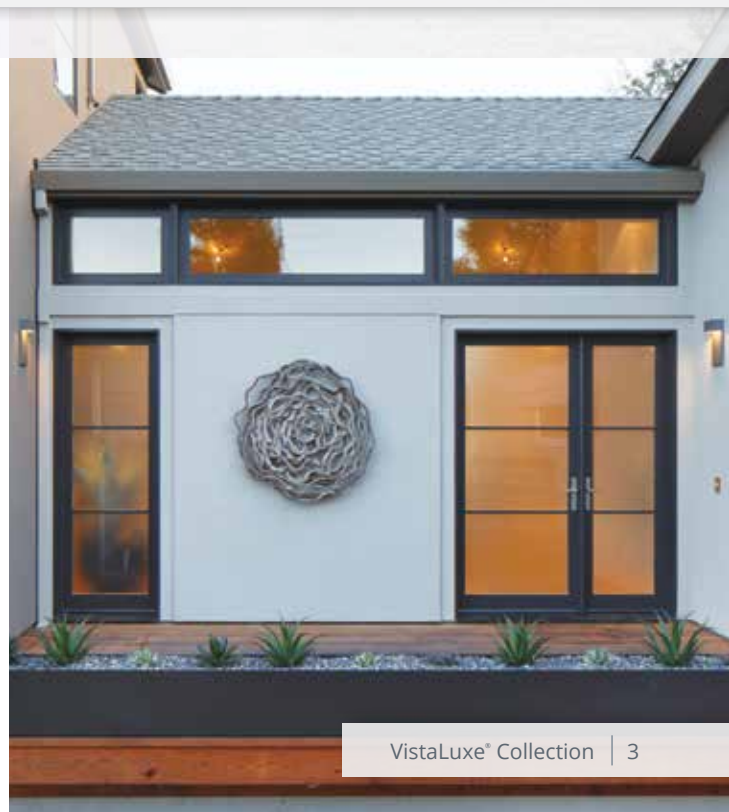


Photo courtesy of GD Nielsen Homes



VistaLuxe® Collection

Create an opening that embraces your design with the VistaLuxe® Collection from Kolbe. Collaboratively developed with architects for designs that utilize clean lines and multiple units to create large expanses of glass, the VistaLuxe Collection allows you to create an opening as unique as your project. An extruded aluminum exterior provides low-maintenance durability, while a wood interior proves modern design can be warm and organic. Designed to provide a streamlined look with enhanced energy efficiency, the VistaLuxe Collection can frame stunning views in any climate.

The VistaLuxe Collection offers:

- Consistent profiles between multiple window and door types
- Precise vertical and horizontal alignment on both the interior and the exterior
- Glass that remains on the same plane across different products
- A reduced visible frame for an increased viewing area

VistaLuxe Collection windows and doors are designed to be mulled together, combining function and style while maintaining a sleek aesthetic. An industry-leading frame-to-daylight-opening ratio lets the view take center stage through these sleek, sophisticated windows and doors.





Photo courtesy of Christopher Simmonds Architect

VistaLuxe Collection Exterior Styles

To perfectly match your architectural design and performance requirements, products in the VistaLuxe Collection are available in two different profile styles: Flush and Accent. Choose the style that best complements the design of your project's aesthetic. Then, customize your windows and doors with color, wood species, glass, and other options.

Flush

Flush style VistaLuxe windows and doors are created with the sash in the same plane as the frame. For an extremely streamlined look, choose Flush style VistaLuxe products. This style is available with either double or triple pane glass.



Accent

To add depth and visual interest to your project, choose Accent style VistaLuxe products. The sash is recessed from the frame to create a shadow line, while still keeping glass in the same plane across other Accent style VistaLuxe windows and doors. For increased energy efficiency, specify Accent Plus with triple pane glass.



Casements & Awnings

VistaLuxe Collection casements and awnings are perfect for configurations that take advantage of natural ventilation. The reduced visible frame allows a greater daylight opening and increased viewing area – an 82% vision area on a 3-foot-by-6-foot casement. The optional Evo operator elevates the streamlined aesthetic, allowing the hardware to remain discreet and maintaining the clean lines of the product.





© Anice Hoachlander

Standard Features

- ▶ Pine interiors, ready for a variety of finishes
- ▶ Extruded aluminum exterior finished with a 70% PVDF fluoropolymer coating (*meets performance requirements of AAMA 2605*)
- ▶ Energy efficient, insulating LoE²-270 glass
- ▶ Accessory grooves are integral to the extruded frames so units can easily be milled together
- ▶ Interior insect screens with Rustic aluminum frames and BetterVue[®] fiberglass mesh
- ▶ Stainless steel exterior operator parts
- ▶ Matte Black folding handle
- ▶ Integral vinyl nailing fin with additional head drip caps

Options* (*custom options are also available*)

- ▶ Insect screens with White, Beige, Coal Black, Sand, Dark Bronze anodized, or Clear anodized frames
- ▶ Wood-wrapped insect screen frames with UltraVue[®] fiberglass screen mesh, aluminum mesh or charcoal-colored aluminum mesh
- ▶ Flat casing and stucco return kits for field application
- ▶ Accessory groove fillers and frame expanders for field application
- ▶ Steel stiffeners with matching mull covers
- ▶ Floor sill available in Dark Bronze anodized or Clear anodized to match or mull with inswing doors or outswing doors
- ▶ Fall prevention device available on casements
- ▶ Motorized operator available on awnings
- ▶ Evo operator
- ▶ Extension jambs (up to 12" applied)
- ▶ Galvanized steel installation clips

* See pages 32-34 for wood species, interior & exterior finish, glass, and divided lite options available for all VistaLuxe Collection products.

Hardware

Folding Hardware

As standard, Matte Black folding handles are applied to VistaLuxe Collection casements and awnings. An optional Satin Nickel finish is also available. Multi-point lock handle finishes will match the finish of operator handle covers.

Evo Operator*

Kolbe's proprietary Evo operator elevates contemporary design and functional operation with a slim, streamlined style designed to complement the clean lines of VistaLuxe casements and awnings. These handle sets feature a square, flat profile and are available in Matte Black, Satin Nickel or White. Simply push the button and slide the lever to open your casement or awning – no cranking required.

*Not intended for egress situations. Cannot be used with all glazing options. Contact your dealer for more information.

Folding Handle
(shown in Matte Black)



Folding Handle
(shown in Satin Nickel)



Evo Operator
(shown in Matte Black)



Evo Operator
(shown in Satin Nickel)



Direct Sets

VistaLuxe Collection direct sets are perfectly designed to complement other VistaLuxe windows and doors. Create a custom configuration by mulling direct sets to operating windows and doors – precise horizontal and vertical alignment across VistaLuxe products ensures your project will flow together seamlessly.





Standard Features

- ▶ Pine interiors, ready for a variety of finishes
- ▶ Extruded aluminum exterior finished with a 70% PVDF fluoropolymer coating (*meets performance requirements of AAMA 2605*)
- ▶ Energy efficient, insulating LoE²-270 glass
- ▶ Accessory grooves are integral to the extruded frames so units can easily be mulled together
- ▶ Glazing is direct set to the interior
- ▶ Integral vinyl nailing fin with additional head drip caps

Options* (*custom options are also available*)

- ▶ Flat casing and stucco return kits for field application
- ▶ Accessory groove fillers and frame expanders for field application
- ▶ Steel stiffeners with matching mull covers
- ▶ Floor sill available in Dark Bronze anodized or Clear anodized to match or mull with inswing doors or outswing doors
- ▶ Extension jambs (*up to 12" applied; over 12" shipped loose for field application*)
- ▶ Galvanized steel installation clips

* See pages 32-34 for wood species, interior & exterior finish, glass, and divided lite options available for all VistaLuxe Collection products.



Corner Direct Sets

Direct set corner windows offer a reduced visible frame for increased viewing area, while maintaining clean, eye-catching lines. Corner units are available factory-glazed with a post, or open for field-glazing with or without a post.





Standard Features

- ▶ Pine interiors, ready for a variety of finishes
- ▶ Extruded aluminum exterior finished with a 70% PVDF fluoropolymer coating (*meets performance requirements of AAMA 2605*)
- ▶ Energy efficient, insulating LoE²-270 glass
- ▶ Accessory grooves are integral to the extruded frames so units can easily be mulled together
- ▶ Glazing is direct set to the interior
- ▶ Integral vinyl nailing fin with additional head drip caps

Options* (*custom options are also available*)

- ▶ Flat casing and stucco return kits for field application
- ▶ Accessory groove fillers and frame expanders for field application
- ▶ Units available as a kit for easier handling (*requires field assembly and glazing; units too large to ship will automatically be sent as a kit*)
- ▶ Extension jambs (*up to 12" applied on factory-assembled units; shipped loose over 12" and for corner kits*)
- ▶ Galvanized steel installation clips
- ▶ Factory-assembled units with a corner post available in angles of 90° and 135°
- ▶ Factory-assembled units without a corner post available in any angle from 90° to 170°, in whole degree increments (*requires field glazing*)

* See pages 32-34 for wood species, interior & exterior finish, glass, and divided lite options available for all VistaLuxe Collection products.



Geometric Direct Sets

Geometric direct set windows may be installed as stand-alone units or over other windows and doors. VistaLuxe Collection geometric direct sets are available in the same exterior styles as other VistaLuxe Collection products, to help seamlessly create large window walls.





Standard Features

- ▶ Pine interiors, ready for a variety of finishes
- ▶ Extruded aluminum exterior finished with a 70% PVDF fluoropolymer coating (*meets performance requirements of AAMA 2605*)
- ▶ Energy efficient, insulating LoE²-270 glass
- ▶ Accessory grooves are integral to the extruded frames so units can easily be milled together
- ▶ Glazing is direct set to the interior
- ▶ Vinyl nailing fin with additional head drip caps

Options* (*custom options are also available*)

- ▶ Flat casing and stucco return kits for field application
- ▶ Accessory groove fillers and frame expanders for field application
- ▶ Steel stiffeners with matching mull covers
- ▶ Floor sill available in Dark Bronze anodized or Clear anodized to match or mull with inswing or outswing doors
- ▶ Extension jambs (*up to 12" applied, over 12" shipped loose for field application*)
- ▶ Galvanized steel installation clips

* See pages 32-34 for wood species, interior & exterior finish, glass, and divided lite options available for all VistaLuxe Collection products.



Brad Feinknopf/OTTO



Photo courtesy of Sennikoff Architects

Swinging Doors

Doors can be a defining feature of a project – VistaLuxe Collection swinging doors are designed with slim stiles and rails to maximize viewing area and invite the light into your space. Combine with other VistaLuxe products into a unique design while preserving symmetry and sightlines.





© Mark Louis Weinberg Photography, Inc.



© Gibeon Photography
Photo courtesy of John & Elaine Carney

Standard Features

- ▶ Panel thicknesses are defaulted by exterior style choice: 1-3/4" or 2-1/8"
- ▶ 3" wide stiles and top rail; 5" bottom rail
- ▶ LVL stiles for superior strength and stability
- ▶ Pine interiors, ready for a variety of finishes
- ▶ Exterior wood parts are treated
- ▶ Extruded aluminum exterior finished with a 70% PVDF fluoropolymer coating (*meets performance requirements of AAMA 2605*)
- ▶ Energy efficient, tempered LoE²-270 glass
- ▶ Accessory grooves are integral to the extruded frames so units can easily be mulled together
- ▶ Low-profile, Dark Bronze anodized aluminum exterior sill with an Oak interior threshold
- ▶ Integrated vinyl nailing fin with additional head drip caps
- ▶ Matte Black Dallas handle set
- ▶ Inswing door has adjustable Black hinges; outswing door has commercial grade Black ball-bearing hinges
- ▶ Weather-resistant, multi-point stainless steel operator parts and hardware channels
- ▶ Black weatherstripping

NOTE: All measurements are nominal.

Options* (*custom options are also available*)

- ▶ Panels available with 10" bottom rail and/or 5" stiles and top rail
- ▶ Electronic multi-point door lock for entrance doors with 5" wide stiles (*not available on double or French doors*)
- ▶ Multiple sill options, including Clear anodized aluminum, thermal or non-thermal ADA-compliant sills
- ▶ Flat casing and stucco return kits for field application
- ▶ Accessory groove fillers and frame expanders for field application
- ▶ Steel stiffeners with matching mull covers
- ▶ Adjustable hinges for outswing doors
- ▶ Extension jambs in a variety of sizes
- ▶ Galvanized steel installation clips
- ▶ Beige or Rustic weatherstripping
- ▶ 3" cross rail
- ▶ Flat panel configurations

* See pages 32-34 for wood species, interior & exterior finish, glass, and divided lite options available for all VistaLuxe Collection products.

Hardware

Dallas Handles

As standard, Matte Black Dallas style handles are applied to VistaLuxe Collection inswing and outswing doors. An optional Satin Nickel finish is also available. Hinge color will coordinate with handle color.

Baldwin Handles

Also available, through our partnership with Baldwin® Hardware, are Santa Monica and Lakeshore handle sets in Matte Black and Satin Nickel.

Dallas Handle
(shown in Matte Black)



Dallas Handle
(shown in Satin Nickel)



Santa Monica Handle
(shown in Matte Black)



Lakeshore Handle
(shown in Satin Nickel)



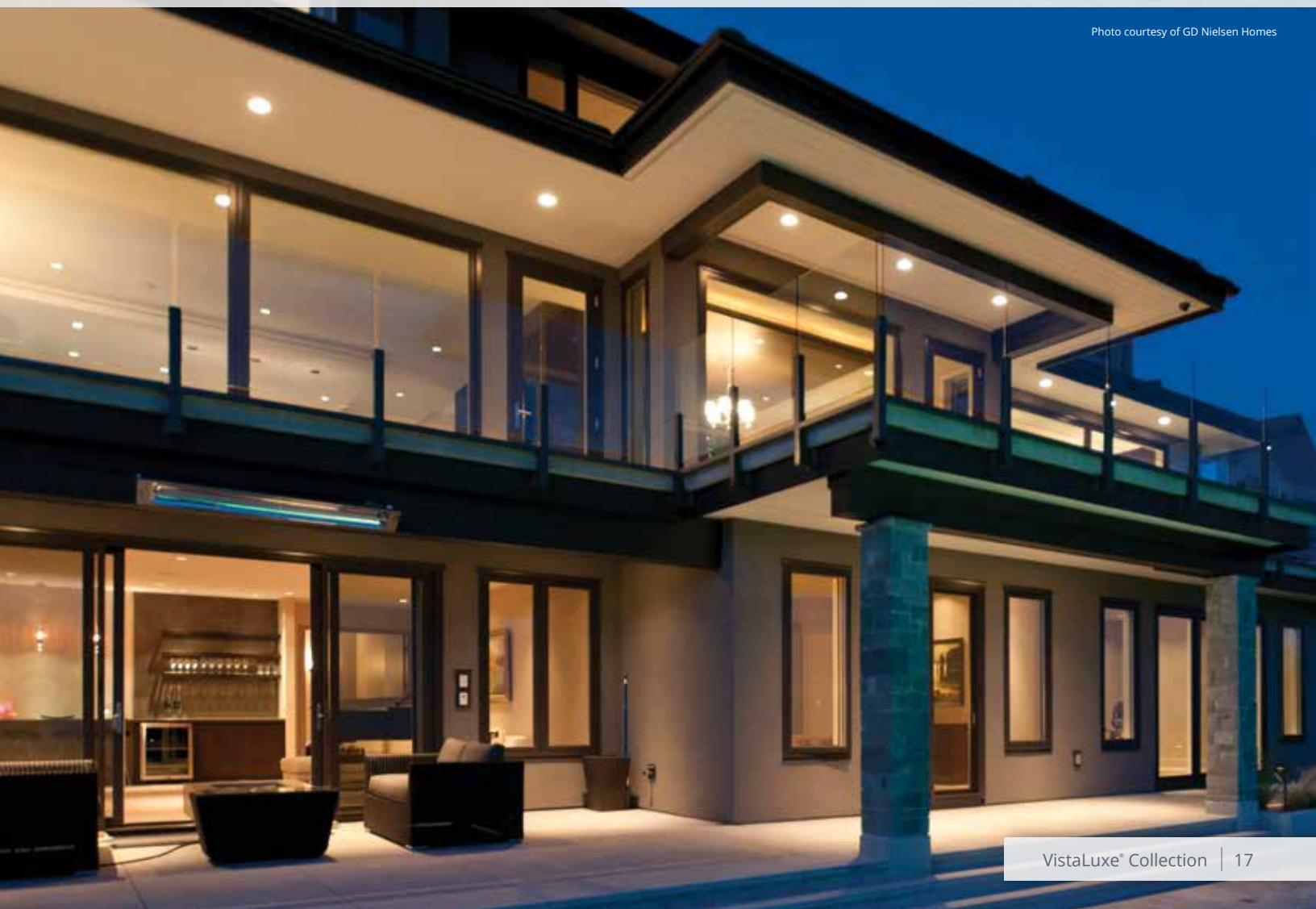




VistaLuxe Complementary Products

Numerous VistaLuxe Complementary products are available to help complete a VistaLuxe project. Because the details make the difference, most VistaLuxe complementary windows and doors have square interior and exterior sticking. And, with all of the customization options for which Kolbe is known, these products offer exceptional design flexibility to match your VistaLuxe project.

Photo courtesy of GD Nielsen Homes



Sliding Windows

Complementary sliding windows provide solutions for larger openings while offering solid performance ratings. The elevated design incorporates a sleek, extruded aluminum exterior with square sticking, a refined wood interior with square glazing bead, and tilt-in sash for easy cleaning. Single, double, triple, and quad configurations are available, including center-opening quad units that are perfect for pass-through service.





Standard Features

- ▶ Constructed of pine, with pine interior stops and wood mull casings on mullied units
- ▶ Exterior wood parts are treated
- ▶ Extruded aluminum exterior finished with a 70% PVDF fluoropolymer coating (*meets performance requirements of AAMA 2605*)
- ▶ Energy efficient, insulating LoE²-270 glass

NOTE: All measurements are nominal.

- ▶ Low profile, fiberglass sill with hidden weep system
- ▶ Tilt-in sash for easy cleaning (*this feature is not offered on units with sash wider than 2'6" and taller than 4'0"*)
- ▶ Matte Black positive action lock
- ▶ Center interlock and stiles have matching sightlines
- ▶ Heavy vinyl nailing fin with head drip caps

Options* (*custom options are also available*)

- ▶ Full or half insect screen with aluminum frame and options for BetterVue or UltraVue fiberglass screen mesh or aluminum screen mesh; frame to match the exterior color of the unit
- ▶ Retractable screen**

- ▶ Accessory groove fillers and frame expanders for field application
- ▶ Extension jambs (*up to 12" applied, over 12" shipped loose for field application*)
- ▶ Galvanized steel installation clips

* See pages 32-34 for wood species, interior & exterior finish, glass, and divided lite options available for all VistaLuxe Collection products.

** Available only on single, triple and quad units.

Operational Configurations

Single Sliding Window

- ▶ Active sash (interior sash) can be either left or right
- ▶ Stationary sash placed on the outside track

Double Sliding Window

- ▶ Primary active sash (interior sash) can be either left or right

Triple Sliding Window

- ▶ Operation = AFA (Active-Fixed-Active)
- ▶ Stationary sash placed on the outside track

Quad Sliding Window

- ▶ Operation = AFFA or FAAF (Active-Fixed-Fixed-Active or Fixed-Active-Active-Fixed)
- ▶ Stationary sash placed on the outside track

Hardware

Sash Lock

The positive action sash lock automatically locks when the window is closed, providing convenient security. Available finishes include Matte Black or Satin Nickel.

Finger Pulls

Finger pulls placed on the active sash assist in side-to-side sliding operation, and are available in Matte Black or Satin Nickel.

Sash Lock
(shown in Matte Black)



Sash Lock
(shown in Satin Nickel)



Finger Pull
(shown in Satin Nickel)



Folding Windows

Complementary folding windows offer expansive openings – perfect for entertaining indoors and out. With up to eight panels per side, folding windows are highly customizable with a number of different configurations available. Three-inch stiles and square interiors and exteriors provide an increased glass area. Add a pleated retractable screen to keep insects out and enjoy the view of any locale.





© Karl Neumann Photography

Standard Features

- ▶ 6-9/16" minimum jamb width
- ▶ 3" wide stiles and rails
- ▶ Frame setup up to 177" wide x 77-1/8" tall; all others knocked down
- ▶ Constructed of pine with pine interior stops
- ▶ Exterior wood parts are treated
- ▶ Extruded aluminum exterior finished with 70% PVDF fluoropolymer coating (*meets performance requirements of AAMA 2605*)
- ▶ Energy efficient, insulating LoE²-270 glass
- ▶ Bronze weep sill with Oak interior threshold
- ▶ Grooved guide rollers with adjustable, ball-bearing wheels carry the folding panels
- ▶ Multi-point mortise latch with Dallas handle set on configurations with an access panel
- ▶ Face-mounted flush bolt locking hardware on folding panels
- ▶ Heavy vinyl nailing fins with head drip caps

NOTE: All measurements are nominal.

Options* (*custom options are also available*)

- ▶ Stile and top rail options: 3" or 5"
- ▶ Bottom rail options: 5" or 10"
- ▶ 2-1/4" thick panels
- ▶ Recessed floor track sill (interior), weep or non-weep in a Bronze anodized finish
- ▶ Recessed weep sill in a Bronze anodized finish
- ▶ Weep sill in a Clear anodized finish
- ▶ Magnetic latch or panel stays to assist in keeping windows stationary while open
- ▶ Single point hardware for access panel
- ▶ Concealed shootbolt locking hardware with Uno or Aria handle sets
- ▶ Black pleated retractable screens (*available on units with the frame setup*)
- ▶ Accessory groove fillers and frame expanders for field application
- ▶ Extension jambs in a wide variety of sizes (*shipped loose for field application if over 12"*)
- ▶ Galvanized steel installation clips

* See pages 32-34 for wood species, interior & exterior finish, glass, and divided lite options available for all VistaLuxe Collection products.

Hardware

Standard on the folding window is face-mounted flush bolt locking hardware. A matching finger pull is available in Matte Black and Satin Nickel, as well as matching hinge handles to help operate the panels. For a cleaner look, concealed shootbolt locking hardware is available with Uno or Aria handle sets in Matte Black or Dull/Brushed Chrome. Configurations with a swinging access panel include a Dallas handle set or Baldwin® Hardware's Santa Monica or Lakeshore handle set in Matte Black or Satin Nickel. To assist in keeping panels stationary while open, magnetic latches or panel stays are available.

Concealed Shoot Bolt
with Uno or Aria Handles



Flush Bolt



Hinge Handle



Magnetic Latch



Panel Stay



Uno
(shown in
Matte Black)



Aria
(shown in Dull/Brushed Chrome)



Dallas Handle
(shown in Matte Black)



Dallas Handle
(shown in Satin Nickel)



Santa Monica Handle
(shown in Matte Black)



Lakeshore Handle
(shown in Satin Nickel)



Folding Doors

Add architectural interest and merge outdoor and indoor space by using complementary folding doors. Choose from a variety of operating styles: doors that swing out, fold to one side, or split and fold to either side. Large expanses of glass are the perfect addition to a project that uses VistaLuxe windows and doors – narrow 3" stiles and square interiors and exteriors provide even greater daylight openings.

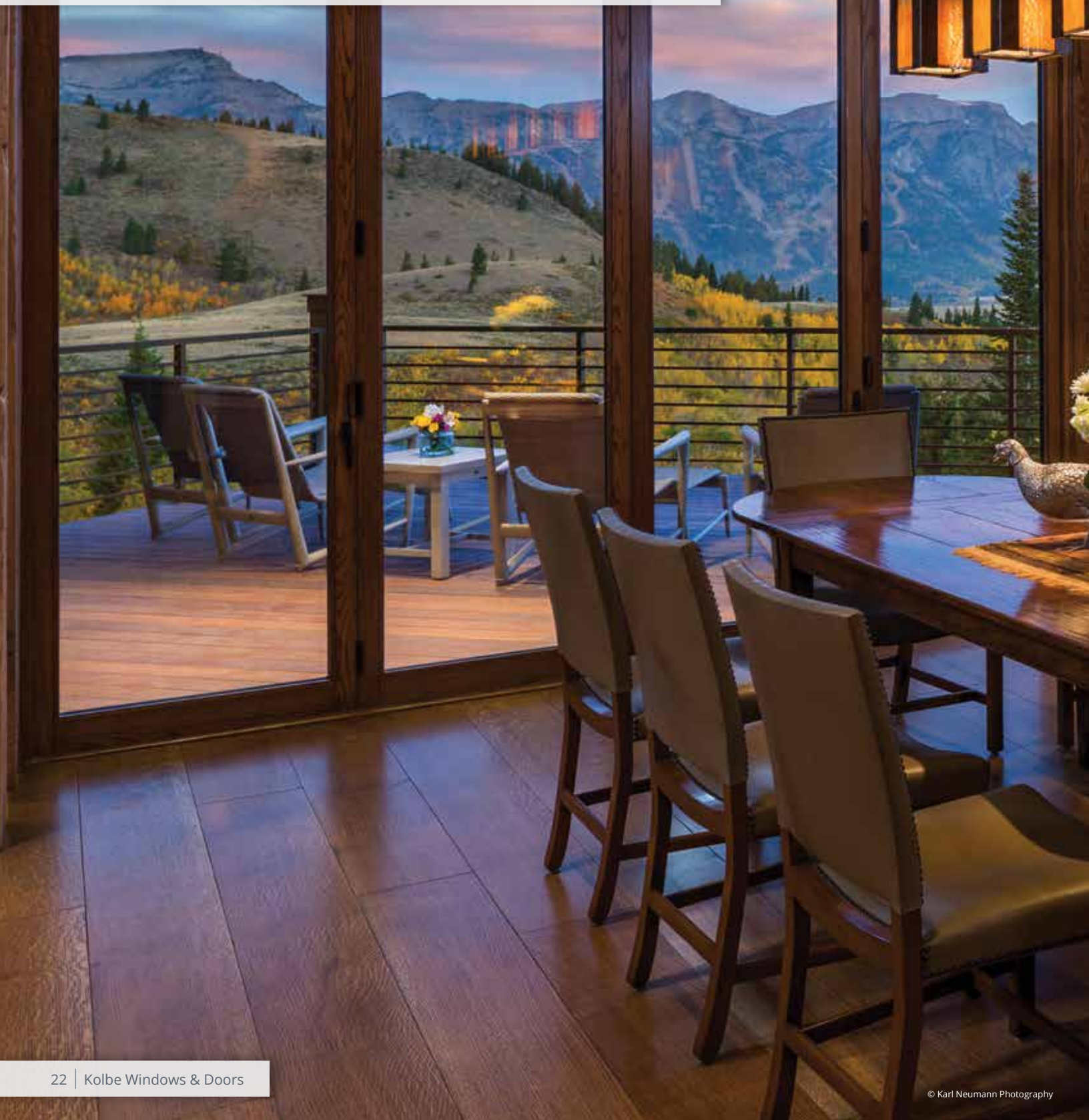




Photo courtesy of Caskey & Caskey of Shorewood Realtors

Standard Features

- ▶ 6-9/16" minimum jamb width
- ▶ 3" wide stiles and top rail; 5" bottom rail
- ▶ Frame setup up to 177" wide x 106" tall; all others knocked down
- ▶ Constructed of pine with pine interior stops
- ▶ Exterior wood parts are treated
- ▶ Extruded aluminum exterior finished with 70% PVDF fluoropolymer coating (*meets performance requirements of AAMA 2605*)
- ▶ Energy efficient, tempered LoE²-270 glass
- ▶ Bronze weep sill with Oak interior threshold
- ▶ Grooved guide rollers with adjustable, ball-bearing wheels carry the folding panels
- ▶ Multi-point mortise latch with Dallas handle set on configurations with an access panel
- ▶ Face-mounted flush bolt locking hardware on folding panels
- ▶ Heavy vinyl nailing fins with head drip caps

NOTE: All measurements are nominal.

Options* (*custom options are also available*)

- ▶ Panels available with 10" bottom rail and/or 5" stiles and top rail
- ▶ 2-1/4" thick panels
- ▶ Recessed floor track sill (interior), weep or non-weep in a Bronze anodized finish
- ▶ Recessed weep sill in a Bronze anodized finish
- ▶ Weep sill in a Clear anodized finish
- ▶ Magnetic latch or panel stays to assist in keeping doors stationary while open
- ▶ Single point hardware for access door
- ▶ Concealed shootbolt locking hardware with Uno or Aria handle sets
- ▶ Black pleated sliding screens available up to 177" wide x 102" tall (*frame size*)
- ▶ Accessory groove fillers and frame expanders for field application
- ▶ Extension jambs in a wide variety of sizes (*shipped loose for field application if over 12"*)
- ▶ Galvanized steel installation clips

* See pages 32-34 for wood species, interior & exterior finish, glass, and divided lite options available for all VistaLuxe Collection products.

Hardware

Standard on the folding door is face-mounted flush bolt locking hardware. A matching finger pull is available in Matte Black and Satin Nickel, as well as matching hinge handles to help operate the panels. For a cleaner look, concealed shootbolt locking hardware is available with Uno or Aria handle sets in Matte Black or Dull/Brushed Chrome. Configurations with a swinging access panel include a Dallas handle set or Baldwin® Hardware's Santa Monica or Lakeshore handle set in Matte Black or Satin Nickel. To assist in keeping panels stationary while open, magnetic latches or panel stays are available.

Concealed Shoot Bolt
with Uno or Aria Handles



Flush Bolt



Hinge Handle



Magnetic Latch



Panel Stay



Uno
(shown in
Matte Black)



Aria
(shown in Dull/Brushed Chrome)



Dallas Handle
(shown in Matte Black)



Dallas Handle
(shown in Satin Nickel)



Santa Monica Handle
(shown in Matte Black)



Lakeshore Handle
(shown in Satin Nickel)



Sliding Patio Doors

Complementary sliding patio doors are a space-saving way to connect your indoor and outdoor living spaces. VistaLuxe sliding patio doors have 3" stiles and top rail and a 5" bottom rail, so you can embrace maximum views. 2-panel, 3-panel, and 4-panel configurations are available, with clean, square interiors and exteriors.





© Anice Hoachlander

Standard Features

- ▶ 3" wide stiles and top rail; 5" bottom rail
- ▶ Constructed of pine, with pine interior stops
- ▶ Exterior wood parts are treated
- ▶ Extruded aluminum exterior finished with a 70% PVDF fluoropolymer coating (*meets performance requirements of AAMA 2605*)
- ▶ Energy efficient, tempered LoE²-270 glass
- ▶ Accessory grooves are integral to the extruded frames so units can easily be mulled together
- ▶ Tandem rollers with adjustable, ball-bearing wheels carry the sliding panel
- ▶ Frame set up (*units up to 8' tall*)
- ▶ Screens with BetterVue® fiberglass mesh and extruded aluminum frames
- ▶ One-piece, pultruded fiberglass sill with continuous aluminum sill nosing and fiberglass sill filler with an Oak interior threshold
- ▶ Matte Black Madison handle set with dual-point lock
- ▶ Heavy vinyl nailing fin with head drip caps
- ▶ Corrosion-resistant stainless steel hardware
- ▶ Black weatherstripping and interlock

NOTE: All measurements are nominal.

Options* (*custom options are also available*)

- ▶ 2-panel, 3-panel and 4-panel configurations, including a 3-wide unit in an Active-Fixed-Active configuration
- ▶ 2-1/4" thick panel
- ▶ Panels available with 10" bottom rail and/or 5" stiles and top rail
- ▶ Accessory groove fillers and frame expanders for field application
- ▶ Universal design aluminum sill ramp kits
- ▶ Secondary security lock (*not available on all 2-1/4" panels*)
- ▶ Narrow flush pull handle
- ▶ "Ultra" sliding screen with extruded aluminum screen frames and UltraVue fiberglass mesh or aluminum mesh
- ▶ Extension jambs in a wide variety of sizes (*shipped loose for field application*)
- ▶ Galvanized steel installation clips
- ▶ Beige weatherstripping and interlock

* See pages 32-34 for wood species, interior & exterior finish, glass, and divided lite options available for all VistaLuxe Collection products.

Hardware

Madison Handles

The refined Madison handle set was developed with a sleek, slim profile, and a clean, contemporary style, and is available with or without a key cylinder in Matte Black or Satin Nickel.

Narrow Flush Pull Handles

Narrow Flush Pull Handles with dual-point locks are available with or without a key cylinder in Matte Black or Satin Nickel.

Madison Handle
(shown in Matte Black)
Interior



Madison Handle
(shown in Satin Nickel)
Exterior



Narrow Flush Pull
(shown in Matte Black)
Interior



Narrow Flush Pull
(shown in Satin Nickel)
Exterior



Multi-Slide Doors

Complementary multi-slide doors upgrade standard patio door openings by expanding rooms to merge the outdoors with the indoors. VistaLuxe complementary multi-slide doors have square interior and exterior sticking, plus various stile, rail, and panel thickness options for exceptional design flexibility to match your VistaLuxe project. Configuration options include stacking, pocketing, and custom corner units.





Photo courtesy of
Christopher Simmonds Architect

Standard Features

- ▶ Jamb depth is dependent on the number of panels used; wood interior jamb extension species to match interior of panels
- ▶ 3" wide stiles and top rail; 5" bottom rail
- ▶ Frame shipped knocked down, prepped for assembly
- ▶ Frame is constructed of Dark Bronze anodized aluminum with pine interior stops
- ▶ Exterior wood parts are treated
- ▶ Extruded aluminum exterior finished with a 70% PVDF fluoropolymer coating (*meets performance requirements of AAMA 2605*)
- ▶ Energy efficient, tempered LoE²-270 glass
- ▶ Glazed to the interior with square wood glazing beads
- ▶ Panel interlock is attached to and is a part of the frame for pocketing systems
- ▶ Extruded aluminum filler to cover head track and side jambs
- ▶ Thermally broken sill and frame
- ▶ Continuous full-width sill (*sill can be set into the floor system for low profile use*)
- ▶ Bottom rolling system with polypropylene-sealed precision bearing wheels
- ▶ Dark Bronze anodized weep sill with stainless steel roller caps (*sill is prepped for water drainage and requires the use of a sill pan as standard*)
- ▶ Dual-point lock
- ▶ Matte Black Madison handle set
- ▶ Folding aluminum nailing fin applied

NOTE: All measurements are nominal.

Options* (*custom options are also available*)

- ▶ Panels available with 10" bottom rail and/or 5" stiles and top rail
- ▶ 2-1/4" thick panels
- ▶ Edge pull available on innermost panel of pocketing systems for ease of operation
- ▶ Panel automation for ease of use
- ▶ Narrow flush pull handle
- ▶ Black pleated sliding screen
- ▶ Extension jambs in a wide variety of sizes (*shipped loose for field application*)

* See pages 32-34 for wood species, interior & exterior finish, glass, and divided lite options available for all VistaLuxe Collection products.

Operational Configurations

- ▶ Stacking: one way or bi-parting
- ▶ Pocketing: one way or bi-parting
- ▶ 90 degree corner
- ▶ Custom degree corners

Hardware

Madison Handles

The refined Madison handle set was developed with a sleek, slim profile, and a clean, contemporary style, and is available with or without a key cylinder in Matte Black or Satin Nickel.

Narrow Flush Pull Handles

Narrow Flush Pull Handles with dual-point locks are available with or without a key cylinder in Matte Black or Satin Nickel.

Madison Handle
(shown in Matte Black)
Interior



Madison Handle
(shown in Satin Nickel)
Exterior



Narrow Flush Pull
(shown in Matte Black)
Interior



Narrow Flush Pull
(shown in Satin Nickel)
Exterior



TerraSpan® Lift & Slide Doors

Because of their large expanses of glass, TerraSpan lift & slide doors are an ideal complement to the VistaLuxe Collection. TerraSpan lift & slide doors stack or pocket up to ten door panels for up to 60 feet of panoramic views. These doors offer more than 900 operational configurations, including corner units, with panels that can either recess into a wall pocket or stack within the opening.





Standard Features

- ▶ Thermally broken fiberglass core frame and panels, finished on the interior with a solid wood cover
- ▶ Panels can pocket into a wall or stack together; 90° corner units are also available*
- ▶ Up to ten panels in a system
- ▶ 4-5/8" stiles and rails provide a large glass area
- ▶ Glazed to the interior with a square wood cover
- ▶ Extruded aluminum exterior with beveled sticking is finished with a 70% PVDF fluoropolymer coating (meets performance requirements of AAMA 2605)
- ▶ Energy efficient, tempered LoE²-270 glass
- ▶ Black anodized flush mount weep sill is thermally broken with 1/2" roller cap height
- ▶ Stainless steel multi-point locking hardware channels provide corrosion resistance and increased security
- ▶ Wheel sets are constructed of 300 series stainless steel (drive bars, wheels, hubs and shafts, rivets, drive pins and link rods) to provide superior corrosion resistance
- ▶ LS100 removable handle set
- ▶ Pocket cover for all pocket doors

NOTE: All measurements are nominal.

* Curved units are also available; contact your Kolbe dealer for further information and to ask about the availability of other options not shown in this catalog.

Options* (custom options are also available)

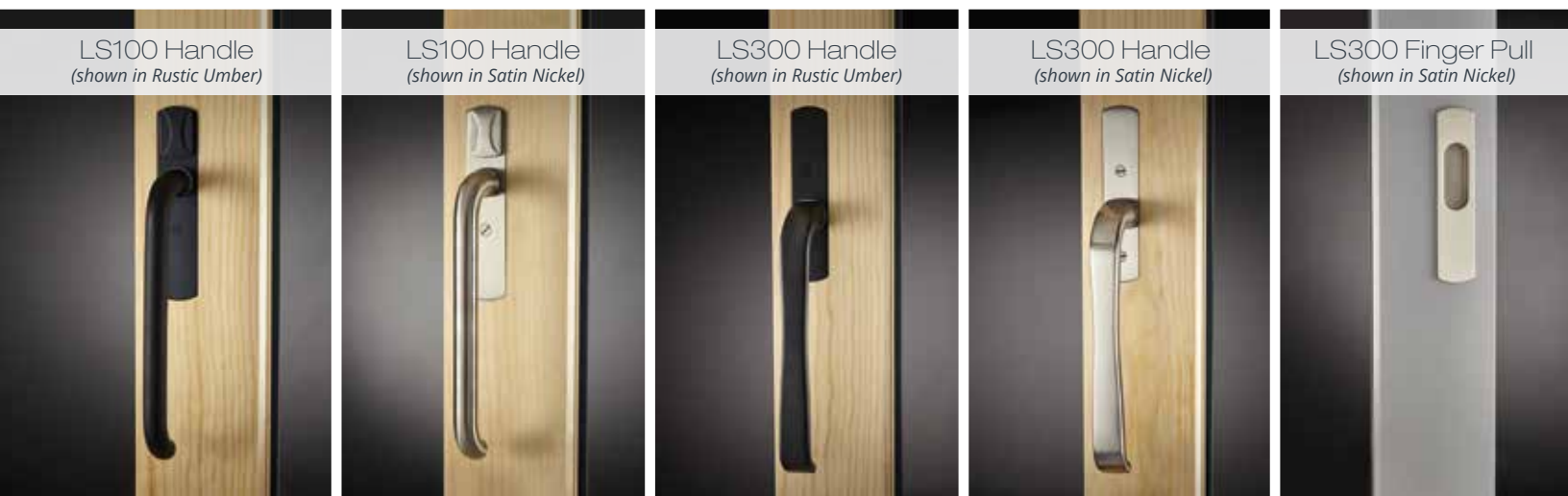
- ▶ 12" bottom rail height for meeting ADA compliance
- ▶ Black anodized recessed sill (weep or non-weep) with 1/2" roller cap height
- ▶ Interior flush sill nosing extensions
- ▶ Flush mount non-weep sill
- ▶ Pre-installed jamb jacks with color matched screw covers
- ▶ High performance or impact performance modifications
- ▶ Panel automation for ease of use
- ▶ Phantom[®] motorized executive insect screen, Genius[®] insect screen, Centor[®] insect screen or Black pleated accordion insect screen (field applied)

NOTE: All measurements are nominal.

* See pages 32-34 for wood species, interior & exterior finish, glass, and divided lite options available for all VistaLuxe Collection products.

Hardware

Standard on the TerraSpan is the interior LS100 removable handle set, which is available in Rustic Umber or Satin Nickel finishes. The LS300 is an optional handle, with a matching finger pull also available in Rustic Umber or Satin Nickel. Double fixed handles (fixed handles on interior and exterior) or single fixed handles (on interior) can be utilized in some designs.







© Karl Neumann Photography

Options & Accessories

Craftsmanship and artistry are hallmarks of Kolbe products. We build innovative windows and doors with a wide array of options. But, don't let the standard options limit your imagination.

At Kolbe, we love a good challenge. We welcome projects that require special wood species, custom divided lite patterns, unique shapes, custom finish colors, unusual mulling configurations – you dream it, we'll build it. Our windows and doors are built to order, which allows you to choose the options that best fit with the design of your home and vision for your project. We offer many customizable options that blend beautifully with your home's décor.



Karen Melvin Photography

Finish Options

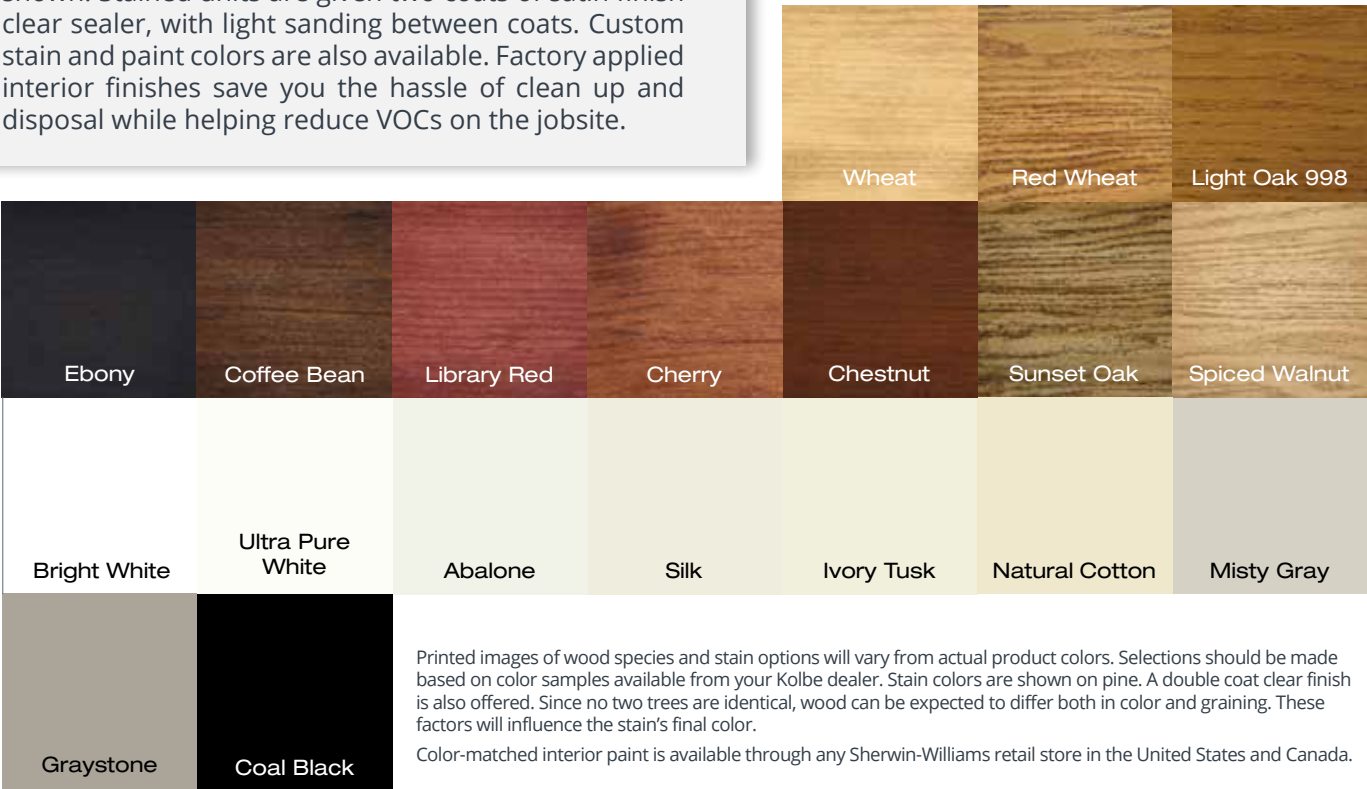
Interior Wood Species

In addition to the standard pine, VistaLuxe windows and doors can be constructed of other optional wood species that enhance their look. Pine and other wood species are sourced from managed forests. FSC-certified wood species are also available for green building projects (FSC® license code FSC-C019541). Ask about the availability of additional wood species.



Interior Finish Options

For units that are ready to install upon delivery, VistaLuxe windows and doors can be prefinished on the interior with one of the water-based stains or paints shown. Stained units are given two coats of satin finish clear sealer, with light sanding between coats. Custom stain and paint colors are also available. Factory applied interior finishes save you the hassle of clean up and disposal while helping reduce VOCs on the jobsite.



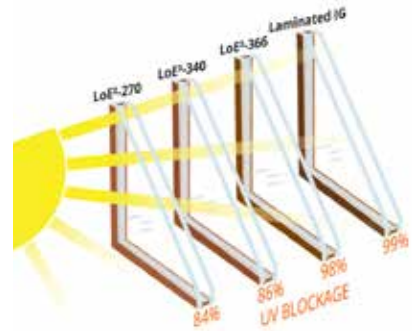
VistaLuxe products are finished with a 70% PVDF fluoropolymer coating, which is the best choice for durability and resistance to chemicals, abrasion, corrosion, and weathering. It carries up to a 30-year warranty, which proves Kolbe's commitment to providing the very best. In addition to the standard colors, custom colors can be specified, as can 4 anodized aluminum finishes and 4 mica fluoropolymer finishes.

Mudpie	Nutmeg	Khaki	Sahara	Beige	Natural Cotton	Spiced Vinegar
Gingersnap	Truffle	Bronze	Rustic	Shadow	Shale	Smokestack
Onyx	Coal Black	Midnight	Steel Gray	Slate	Castlerock	Timberwolf
Corbeau	Sapphire	Coastal Storm	Anchor Gray	Lunar	Emerald Isle	Mediterranean
Cider	Copper Canyon	Maize	Green Tea Leaf	Basil	Hartford Green	Mystic Ivy
Papaya	Roma	Chutney	Create Your Color		Anodized	Clear Anodized
Galaxy Silver Mica	Silverstorm Mica	Cosmic Gray Mica	Night Sky Mica	Mica	Black Anodized	Dark Bronze Anodized
					Champagne Anodized	

VistaLuxe® Collection | 33

Glass Options

Kolbe offers glazing options to provide optimum energy efficiency for the geographic region in which you live. As standard, most units use double-pane insulating LoE²-270 glass. LoE is a “smart” coating that reduces energy transfer through the insulating glass unit. LoE coated glass is also designed to reflect room-side heat back into the room during winter months. In summer, visible sunlight is allowed in while blocking 96% of the sun’s infrared heat energy. The result is reduced heating and cooling costs throughout the year. LoE coatings also reduce the potential for condensation, as well as provide protection against fading of furniture, fabrics and carpeting.



NOTE: Tested units include argon. The laminate has 1/4" inner pane. Based on Lawrence Berkeley Lab (LBL) Window 5.2 © 2003 analysis for classical UV transmission data.

NOTE: Not all glass is available on all products. Please contact your Kolbe dealer for product specifics.

LoE-180, LoE²-270, LoE³-340, LoE³-366, Neat and Preserve are trademarks of Cardinal IG.

Kolbe also offers the following glass options, as well as many specialized options.

LoE-180

When the weather turns frigid, LoE-180 glass is the perfect cold remedy. It keeps homes warmer and more comfortable by blocking heat loss to the outside and letting the sun’s heat stream in to increase solar heat gain.

LoE²-270

Offering a balance of high clarity and low solar heat gain, LoE²-270 is standard in most VistaLuxe Collection products. In summer, it rejects the sun’s heat and damaging UV rays. In winter, it reflects heat back into the room.

LoE³-340

A tinted glass recommended for warm climates that achieves solar control over a wide range of the spectrum, while also helping to reduce glare.

LoE³-366

Offers an ideal balance of solar control and high visibility by blocking 95% of UV rays while maintaining the interior temperature.

ThermaPlus LoE

Helps to meet the strictest energy requirements; provides protection against heat loss and UV damage.

Triple Pane

Provides a greater energy performing window that keeps indoor air warm and comfortable, prevents heat loss and lowers your heating bills. It is constructed with three panes of glass, Thermo-Edge spacer bars and is available with a variety of LoE coatings that best suit your needs.

Tinted, Colored or Patterned

Provides shading, privacy or visual interest.

Tempered

Standard in Kolbe doors to address safety concerns. Also available in window units to meet specific building codes.

Laminated

Benefits include safety, security, sound control and provides the ultimate in UV blockage.

Neat®

Harnesses the sun’s UV rays to loosen dirt so water can rinse it away, leaving windows virtually spotless. A special sputter-coating process makes the glass ultra smooth, so the water “sheets off” more readily than it would on uncoated glass, allowing you to spend less time cleaning.

Divided Lite Options

Further customize your VistaLuxe windows and doors with the addition of divided lites. Kolbe’s performance divided lite (PDL) glazing system gives the appearance of true divided lites without sacrificing energy efficiency. Extruded aluminum bars are adhered to the exterior and wood bars to the interior of the single lite of insulating glass. Spacer bars are installed within the insulating glass unit, helping create the illusion of true divided lites. Square profile VistaLuxe PDL bars are available in 5/8", 7/8", 1-1/8", 1-3/8", 1-3/4", 2-1/4" and 4-1/2" bar widths, with custom widths available.



Professional Tools

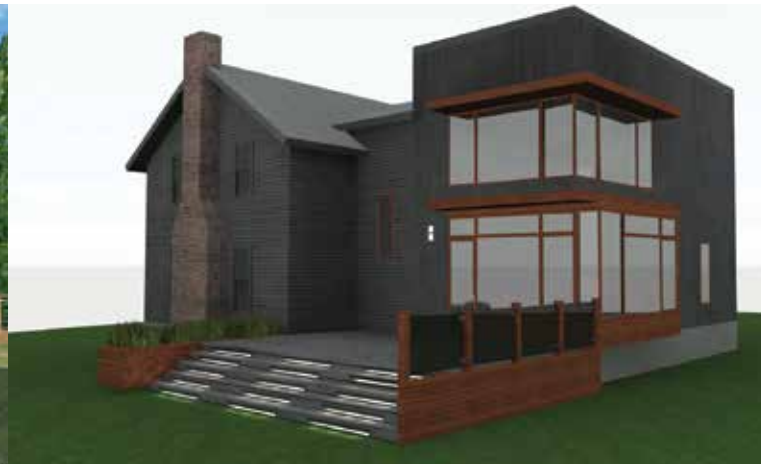
Kolbe offers a number of tools to help building professionals provide a client with a realistic visual of their project. VistaLuxe Collection 3D models offer great design flexibility for design professionals who prefer to work in three dimensions. These models provide the ability to view products from different perspectives, incorporate options, and customize models specific to projects.

To download VistaLuxe Revit® and SketchUp™ models, visit:

- ▶ www.kolbewindows.com/resources/architect-library
- ▶ www.bimobject.com

Also available at www.kolbewindows.com, find:

- ▶ Cross section drawings
- ▶ Available sizes
- ▶ Installation instructions
- ▶ Performance data
- ▶ Thermal performance information
- ▶ Mulling limitations
- ▶ Product and installation videos



Kolbe is proud to offer VistaLuxe Collection windows and doors that have been verified by the Passive House Institute US (PHIUS) to help you continue your commitment to high performance building principles. Our range of certified products means you can get American-made windows and doors for your entire passive house project from one manufacturer. Kolbe's PHIUS-certified products have the same attention-to-detail and superior quality for which Kolbe products are known, and are available with the multitude of options you've come to expect from Kolbe. For more information on our PHIUS-verified products, visit www.kolbewindows.com/resources/phius.

